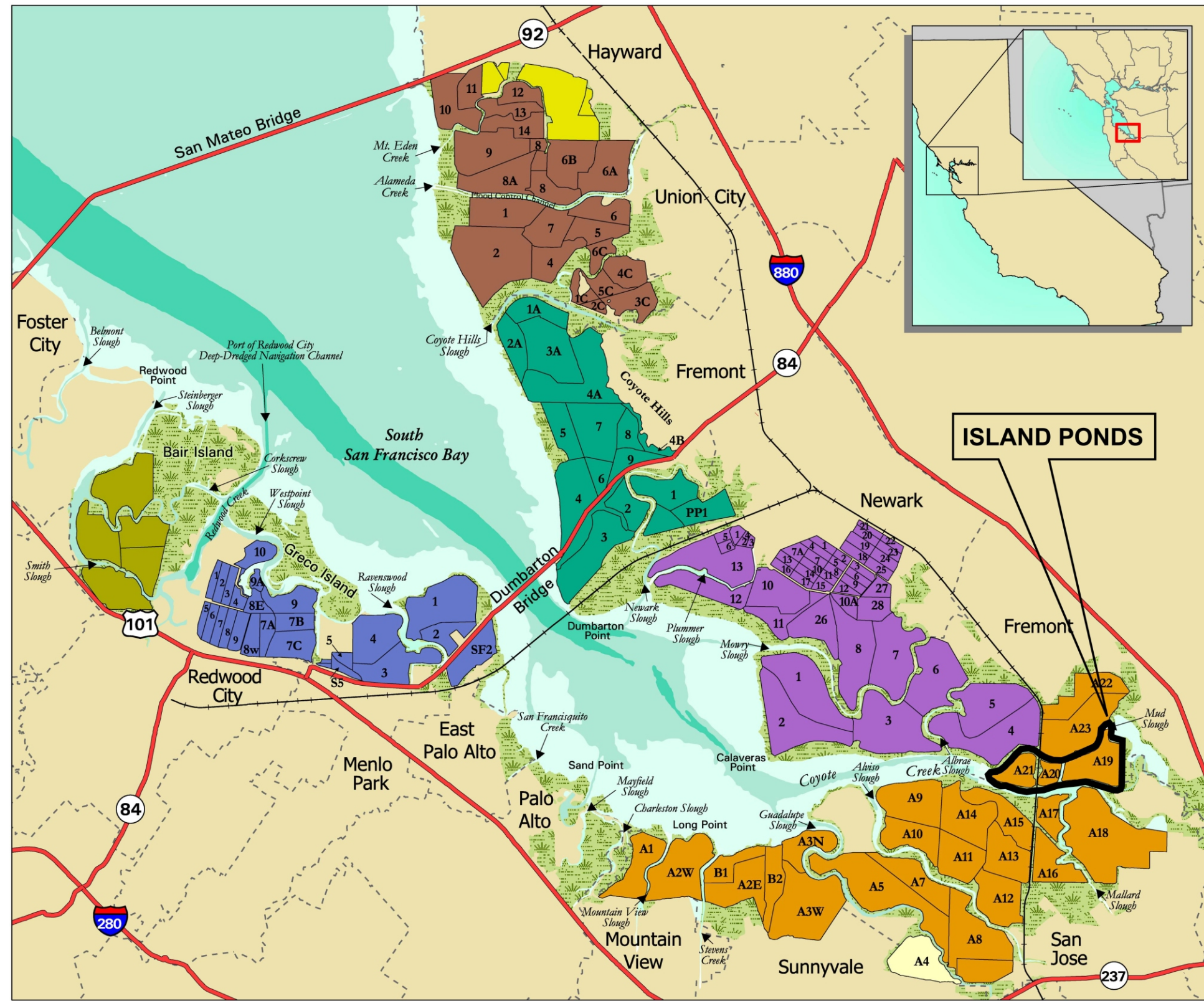


R:\new\16826\Graphics\Compensatory Mitigation Goals.cdr - 12/21/05 - YE



Salt Production Plants (Former and Current)

- Alviso
- Baumberg
- Newark #1
- Newark #2
- Redwood City

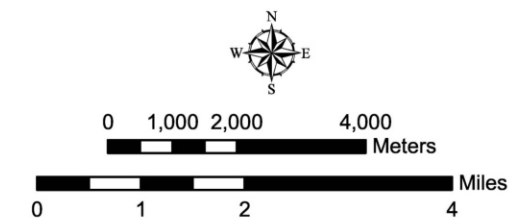
Other Ponds

- A4
- Eden Landing
- Bair Island

Regional Features

- Marsh
- Deep Bay
- Shallow Bay
- Tidal Flats
- City Boundaries
- Highways
- Rail

ISLAND PONDS



Wetlands and Water Resources 2005

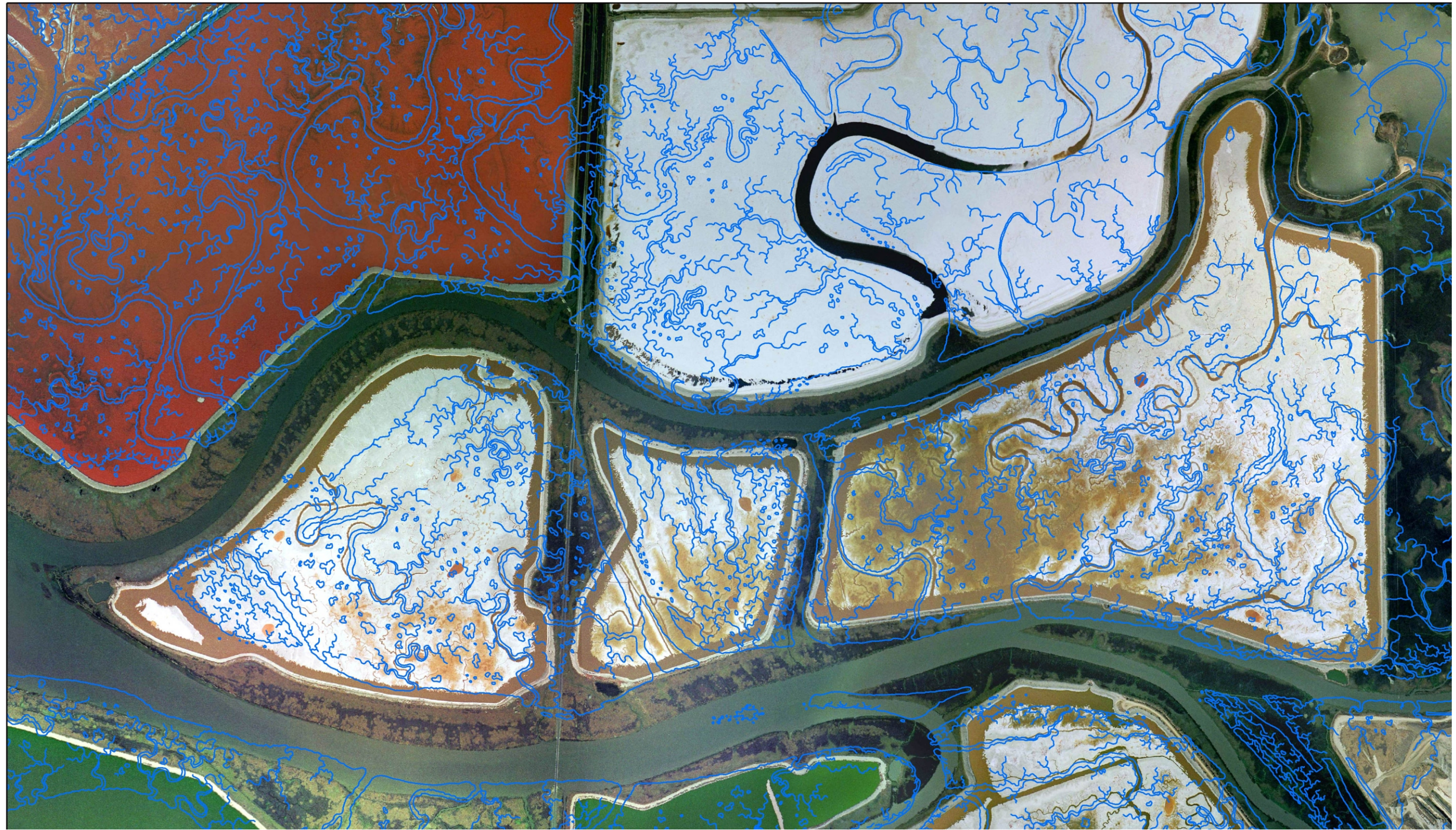
**Island Ponds and Vicinity
Island Ponds Restoration Project**
Alameda County, California



1:10,000 at tabloid layout
 0 500 1,000 1,500 2,000 Feet

Site Map
Island Ponds Restoration Project
 Alameda County, California

R:\new\16826\Graphics\Historic Marsh Channels.cdr - 11/30/05 - YE



Wetlands and Water Resources 2005



Historic Marsh Channels
Island Ponds Restoration Project
 Alameda County, California

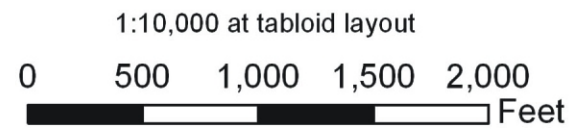
R:\new\16826\Graphics\Bathymetric Lines 2005.cdr - 11/30/05 - YE

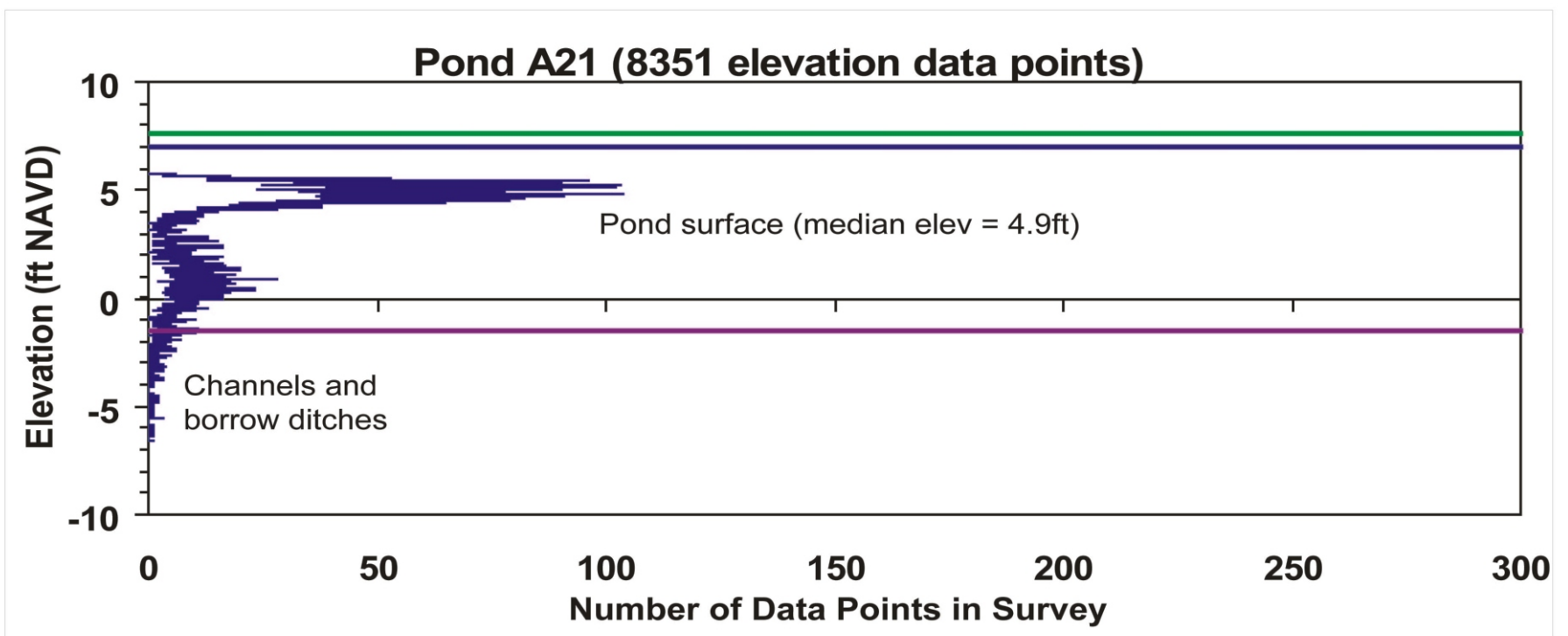
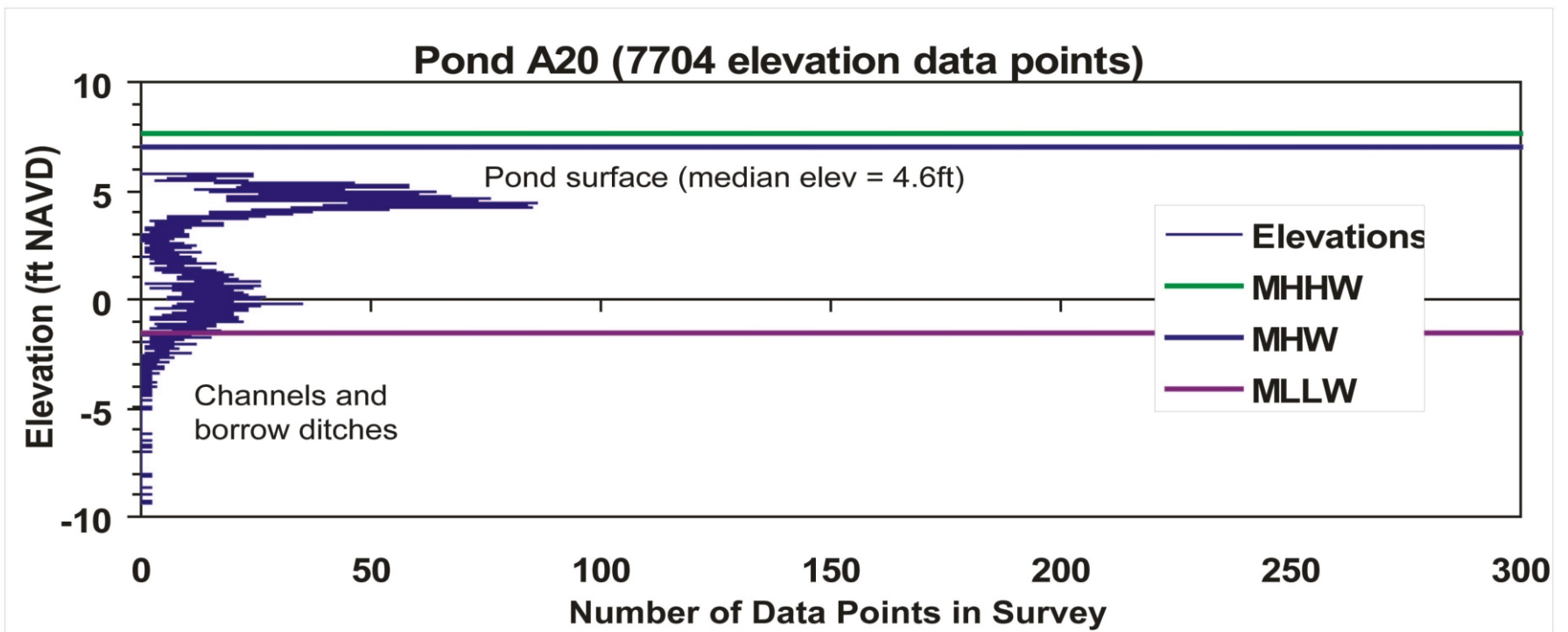
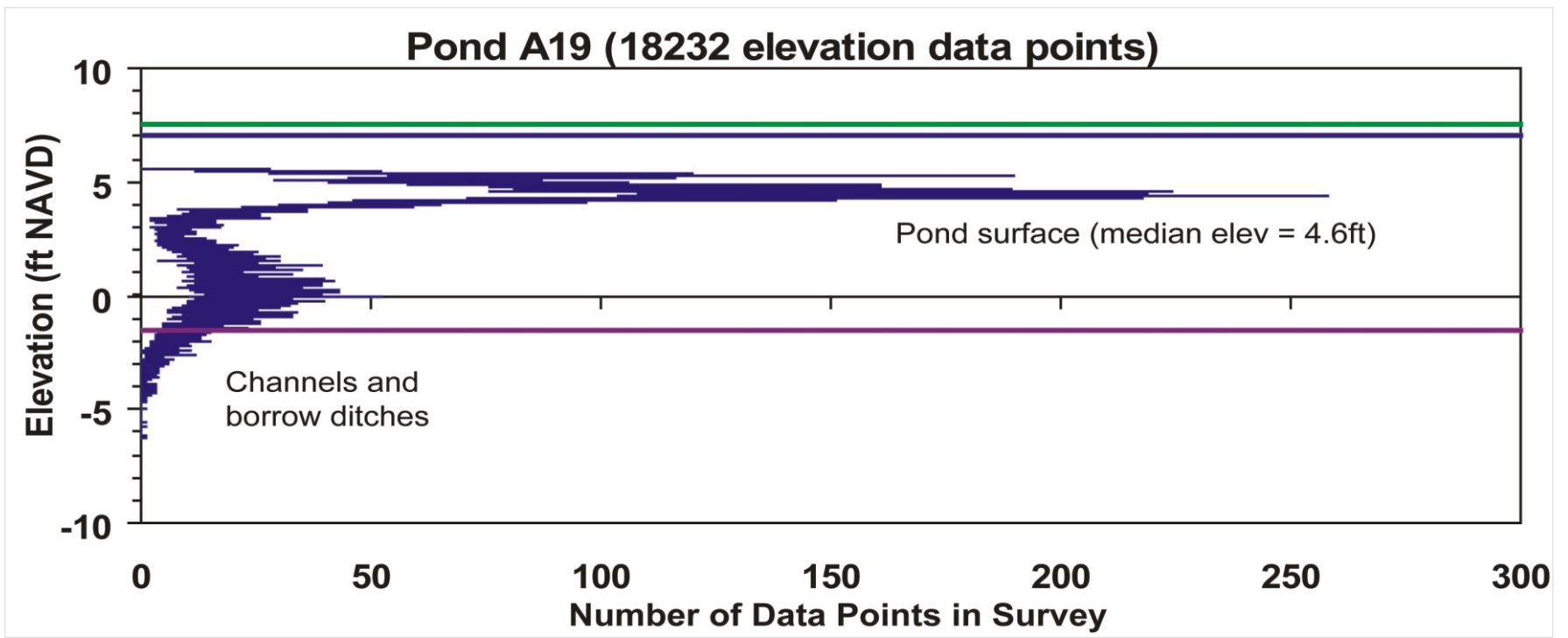


Wetlands and Water Resources 2005

2004 USGS Island Pond Bathymetry Sampling Transects Locations
Island Ponds Restoration Project
 Alameda County, California

- Bathymetric Survey Points





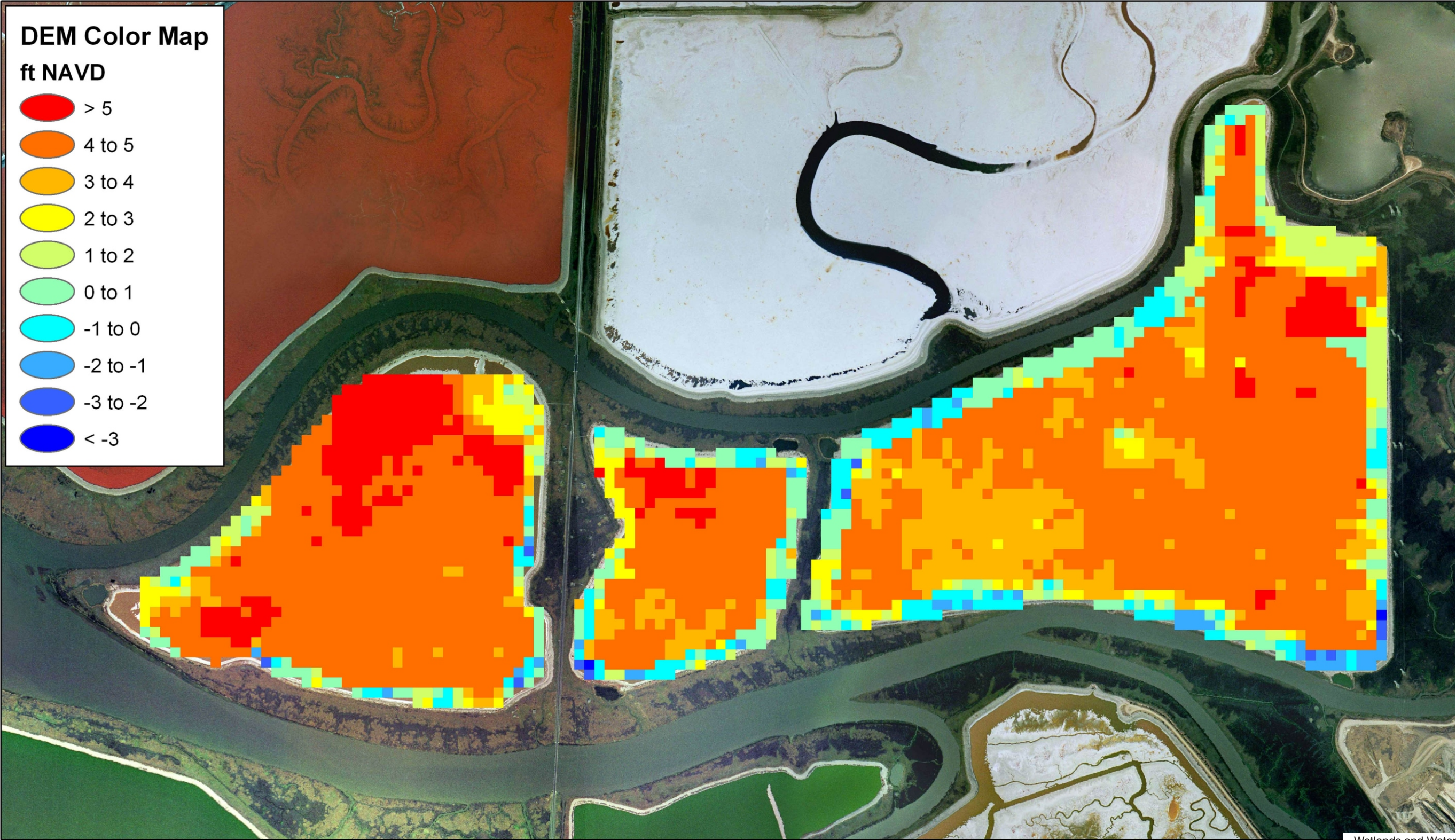
Notes:

- 1) These histograms show the number of data points by elevation, which describes the elevation distribution of the pond surfaces (upper mode of each plot) and the channels and borrow ditches (lower mode of each plot). A higher number of data points at a given elevation means that a larger percent of the pond surface or channels are at the indicated elevation
- 2) Tidal datum values shown are preliminary, based on Jan-Apr 2004 Coyote Creek at UPRR crossing tide stage data from South Bay Salt Pond Restoration Project
- 3) USGS pond elevation data updated May 2005; pending reference elevation update December 2005
- 4) All data converted from NGVD29 to NAVD88 with VertCon

Wetlands and Water Resources 2005

**Pond Elevation Data Histogram
USGS 2004 Bythemetric Surveys
Island Ponds Restoration Project**

Alameda County, California

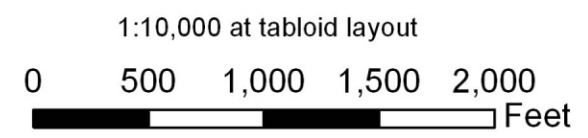


R:\new\16826\Graphics\DEM 2005.cdr - 11/29/05 - YE

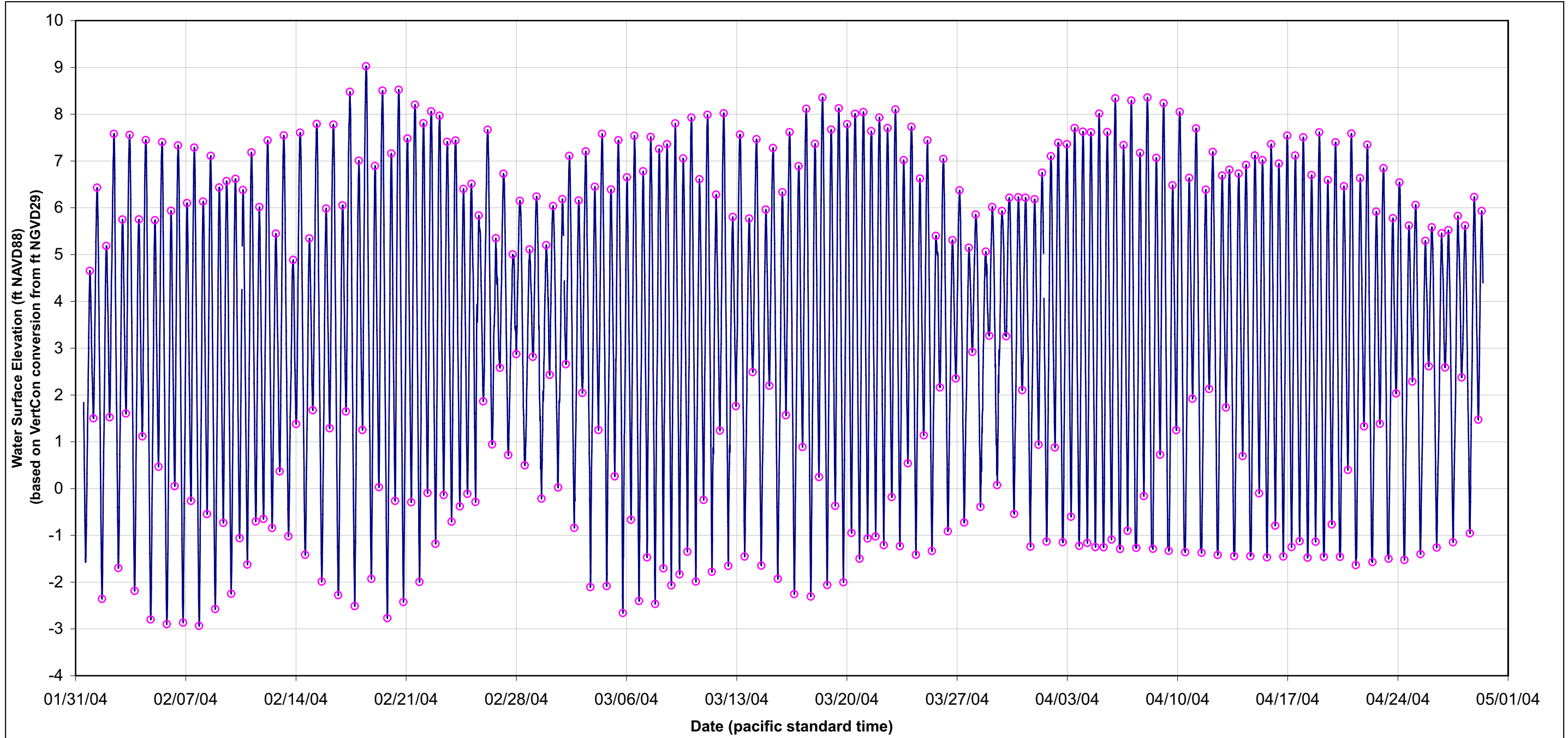
Wetlands and Water Resources 2005

Background photo: 2002 aerial photo.
DEM based on 2004 USGS bathymetric data.

Digital Elevation Model Pond Surfaces
Island Ponds Restoration Project
Alameda County, California



R:\new\16826\Graphics\Tide Stage Data.cdr - 12/23/05 - YE



Wetlands and Water Resources 2005

Tide Stage Data for Coyote Creek at UPRR Bridge Island Ponds Restoration Project

Alameda County, California

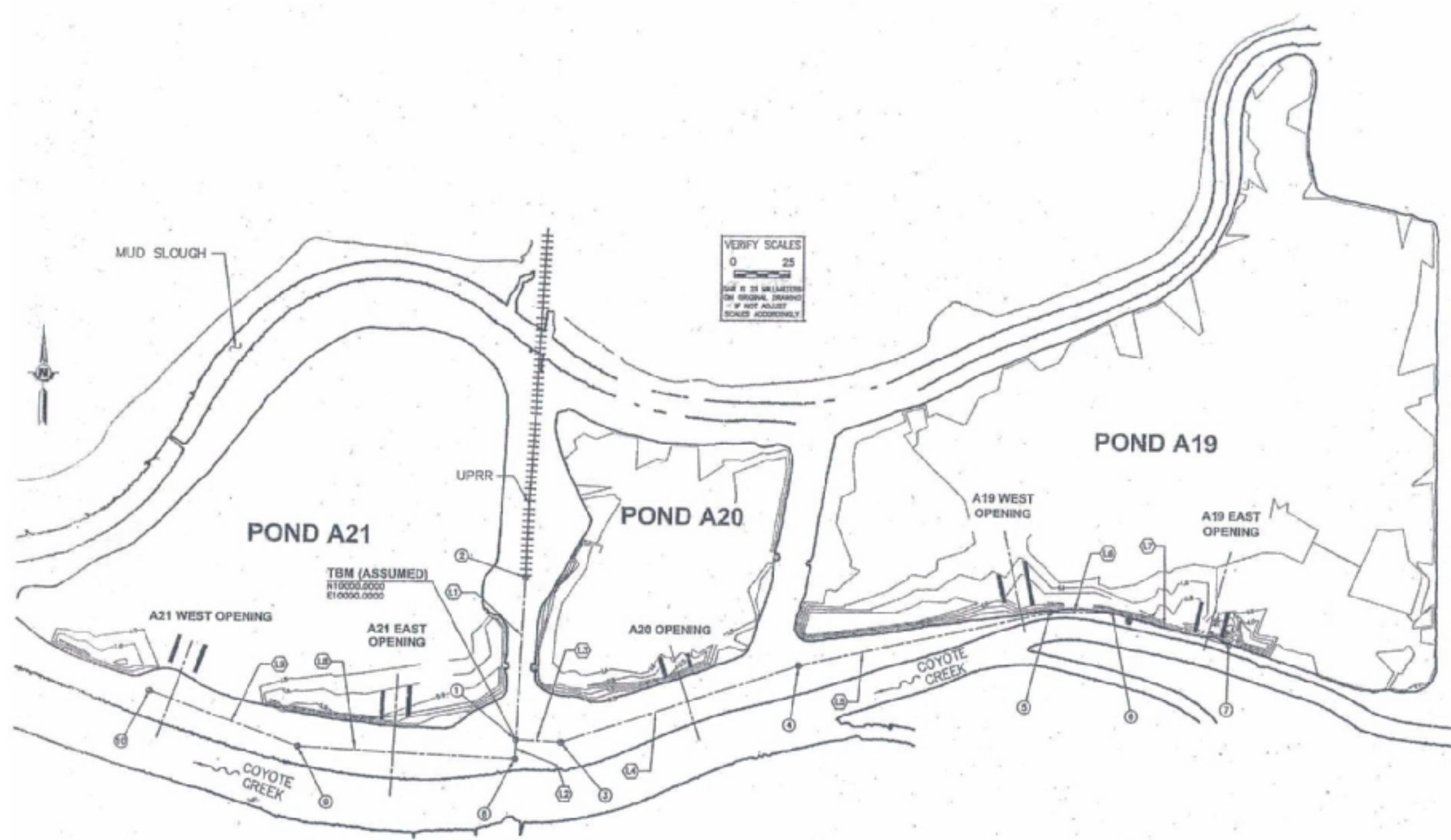
R:\new\16826\Graphics\Gypsum on Levee Pond Surface.cdr - 11/30/05 - YE



Wetlands and Water Resources 2005

Photo from atop Pond A19 levee, October 10, 2005.
Note gypsum blocks on levee surface, from excavating borrow ditch materials during levee maintenance.
Note gypsum-covered pond surface.
Note borrow ditch between levee and pond surface. Coyote Creek on left.

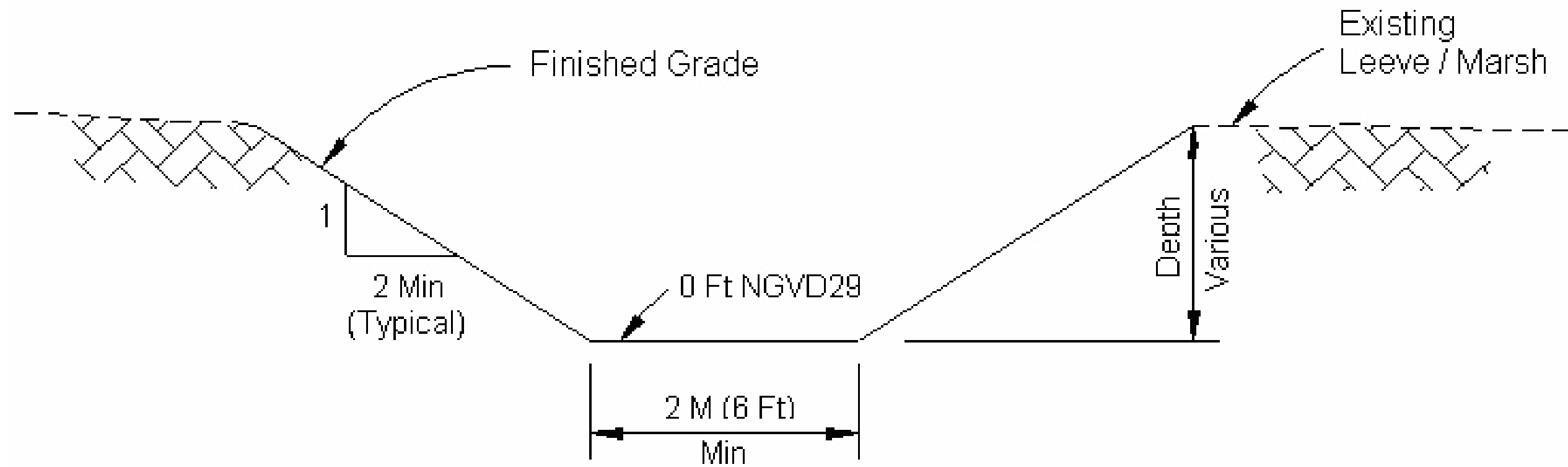
Gypsum on Levee and Pond Surface
Island Ponds Restoration Project
Alameda County, California



R:\new\16826\Graphics\Levee Breach Locations.cdr - 11/30/05 - YE

SCVWD, 2005

Levee Breach Locations
Island Ponds Restoration Project
 Alameda County, California



Typical Cross Section
Not To Scale

R:\new\16826\Graphics\Schematic of Levee Breaches.cdr - 11/30/05 - YE

SCWWD, 2005

Schematic of Levee Breaches
Island Ponds Restoration Project
 Alameda County, California